

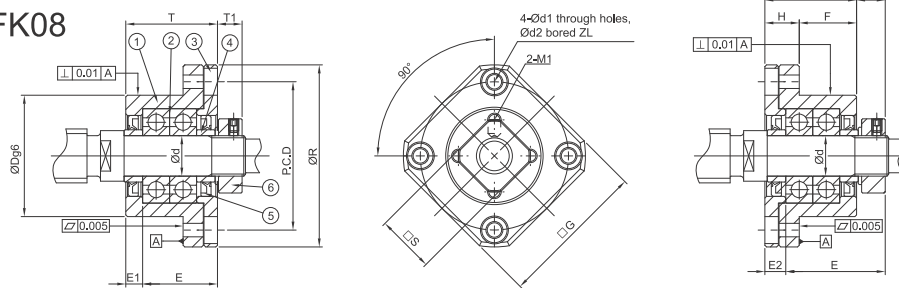
## Linear Motion Component ▶ Support Units

Fixed Side Economic Type | Flange Design | GFK

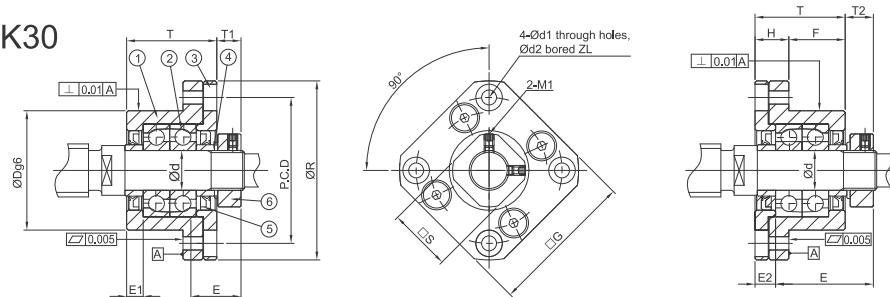
### GFK-B



GFK06 ~ GFK08



GFK10 ~ GFK30



Economic Type	Dimensions													
	Ød	ØR	□G	T	H	F	ØDg6	E	Installation (A)		Installation (B)		PCD	Ød1
									T1	E1	T2	E2		
GFK06	6	36	28	20	7	13	22 <sup>+0.017</sup> <sub>-0.020</sub>	22	5.5	3.5	6.5	4.5	28	3.4
GFK08	8	43	35	23	9	14	28 <sup>+0.017</sup> <sub>-0.020</sub>	26	7	4	8	5	35	3.4
GFK10	10	52	42	27	10	17	34 <sup>+0.025</sup> <sub>-0.025</sub>	29.5	7.3	5	8.5	6	42	4.5
GFK12	12	54	44	27	10	17	36 <sup>+0.025</sup> <sub>-0.025</sub>	29.5	7.3	5	8.5	6	44	4.5
GFK15	15	63	52	32	15	17	40 <sup>+0.025</sup> <sub>-0.025</sub>	36	9.8	6	12	8	50	5.5
GFK17	17	77	61	45	22	23	50 <sup>+0.025</sup> <sub>-0.025</sub>	47	11	9	14	12	62	6.6
GFK20	20	85	68	52	22	30	57 <sup>+0.010</sup> <sub>-0.025</sub>	50	7.8	10	12	14	70	6.6
GFK25	25	98	79	57	27	30	63 <sup>+0.025</sup> <sub>-0.025</sub>	59	13	10	20	17	80	9
GFK30	30	117	93	62	30	32	75 <sup>+0.010</sup> <sub>-0.025</sub>	61	11	12	17	18	95	11

Ordering Example	GFK Model No.	10 Shaft Dia.	ER Grade	N Surface finish	J Bearing category
------------------	---------------	---------------	----------	------------------	--------------------

## Linear Motion Component ▶ Support Units

Fixed Side Economic Type | Flange Design | GFK

### GFK-B

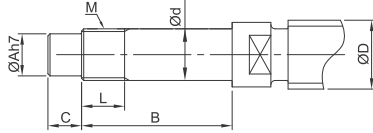


### Components

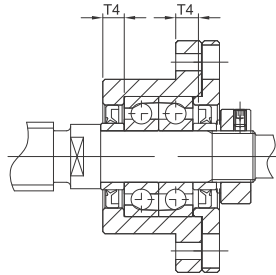
No.	Parts	Material	Q'ty
①	Main housing	S50C	1
②	Bearing	SUJ2	1 pair
③	Cover	S50C	1
④	Space ring	S50C	2
⑤	Seal (<math>\lt; \varnothing 8</math> one seal only)	NBR	2
⑥	Lucknut	S50C	1

- ① ② ③ are in one unit. No disassemble for accuracy concern.
- Bearing filled with proper lithium soap lubricant and sealed.

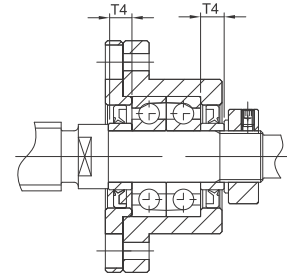
### Recommended Processing Dimensions of Shaft



### Installation(A)



### Installation(B)



Unit : mm

Dimensions				Recommended Processing Dimensions of Shaft							
				Ball Screw Shaft O. D.		Shaft End Diameter	Processing Sizes of Shaft			Nominal Thread	
Ød2	Z	M1	□S	ØD	Ød	ØA	B	C	M	L	T4
6	3.3	M3	12	8	6 <sup>-0.005</sup>	4	28	8	M6*P0.75	8	5
6	3.3	M3	14	10 / 12	8 <sup>-0.005</sup>	6	32	9	M8*P1.0	10	5.5
8	4	M3	16	12 / 14 / 15	10 <sup>-0.005</sup>	8	36	15	M10*P1.0	11	5.5
8	4	M3	19	14 / 15 / 16	12 <sup>-0.005</sup>	10	36	15	M12*P1.0	11	5.5
9.5	6	M3	22	18 / 20	15 <sup>-0.005</sup>	12	47	20	M15*P1.0	13	10
11	10	M4	24	20 / 25	17 <sup>-0.005</sup>	15	53	23	M17*P1.0	17	7
11	10	M4	30	25 / 28 / 30	20 <sup>-0.005</sup>	17	62	25	M20*P1.0	17	11
15	13	M5	35	28 / 30 / 32	25 <sup>-0.005</sup>	22	75	18	M25*P1.5	20	15
17.5	15	M6	40	36 / 40	30 <sup>-0.005</sup>	25	72	38	M30*P1.5	25	9

• Supported Side spec refer to P.053~P.0054